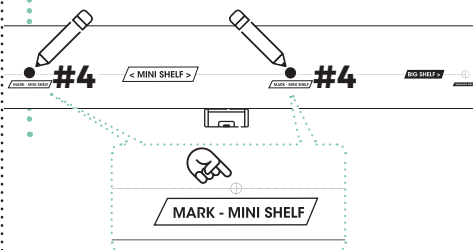


Step 4 | Drill Marking- Mini Shelves

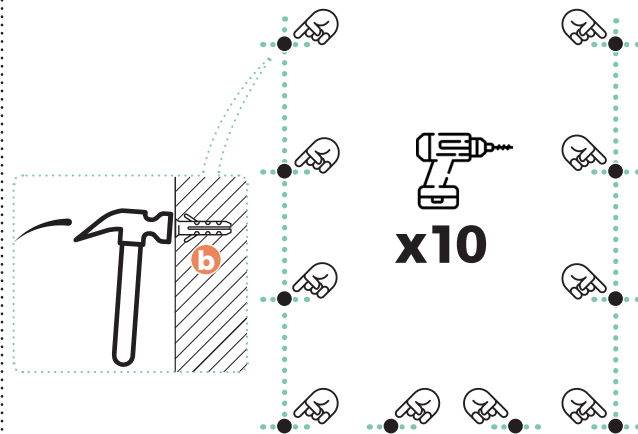
- To mark the left and right drill holes for the mini shelves located beneath the third large shelf, use the mini shelf drill ruler.

● #3

● #3



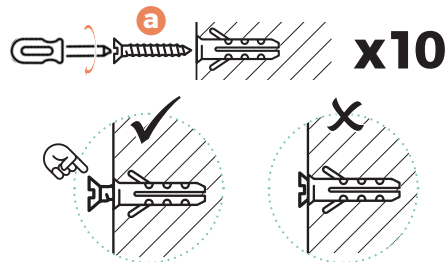
Step 5 | Drilling



- Drill marked holes using a 7mm (9/32- Inch) drill bit.
- Press the plastic anchors into the wall using a hammer.

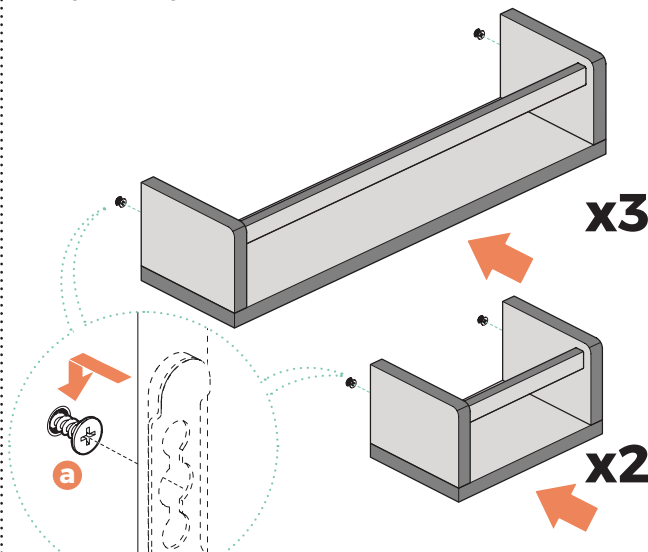
Step 6 | Fixing the screws to the wall

- Attach the screws into the anchors.



Step 7 | Hanging the shelves

- Hang the 3 big shelves and 2 mini shelves on the wall.



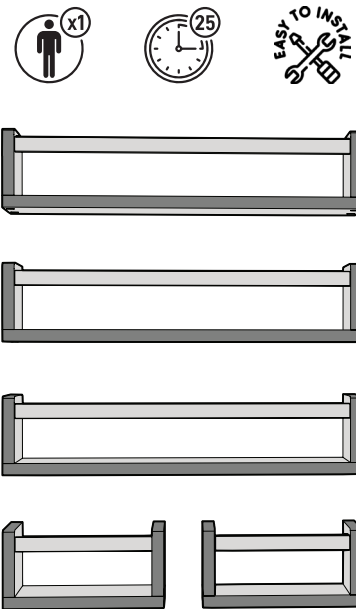
Thank you for your purchase

We hope you enjoyed the product and would appreciate your product review



NURSERY BOOK SHELVES

ASSEMBLY INSTRUCTIONS



Need assistance? **We've got you covered!**
support@homeypanda.com

SUPER EASY INSTALLATION VIDEO

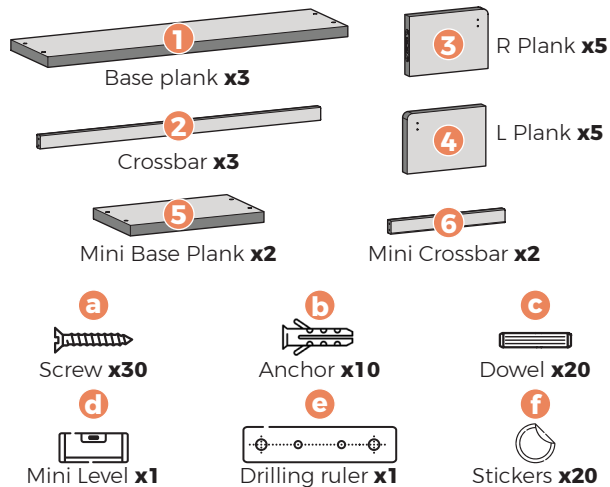
SCAN TO WATCH 

EASY AS 1-2-3



OR VISIT: homeypanda.com/woohoo

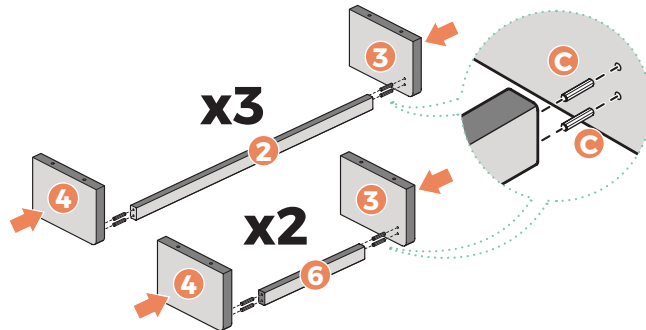
Parts List



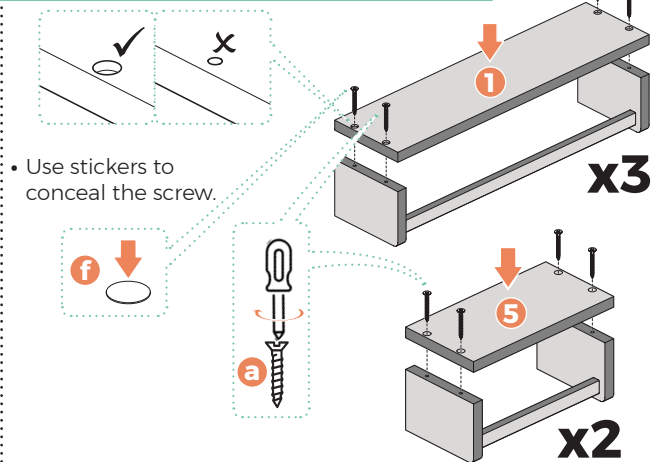
Tools Needed



Step 1 | Assembling the Shelves



Step 2 | Assembling the Shelves

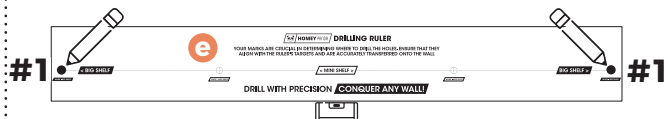


The possibilities are endless!

- Feel free to unleash your creativity and install the shelves in alternative arrangements or different rooms.

Step 3 | Drill Marking- Big Shelves

- To mark the positions of the left and right drill holes, use the drilling ruler and a mini level.



- Ensure consistent vertical spacing between all shelf levels, considering the height of toys, books and other items you intend to place on the shelves.

